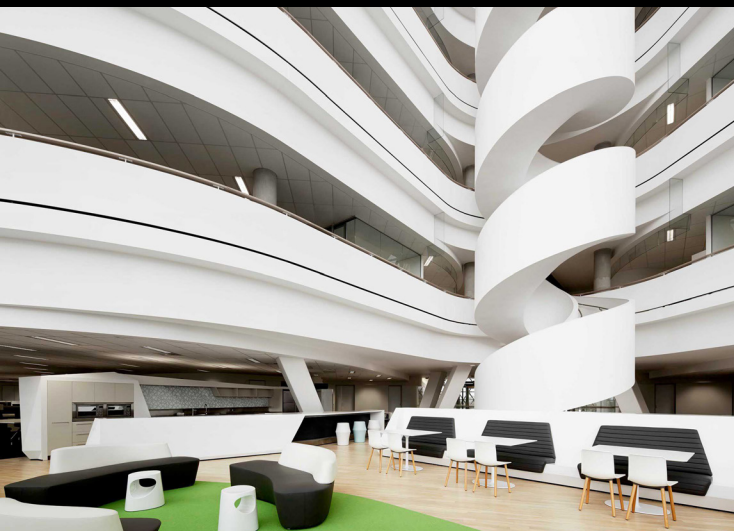




**CEMENT CONCRETE
& AGGREGATES AUSTRALIA**

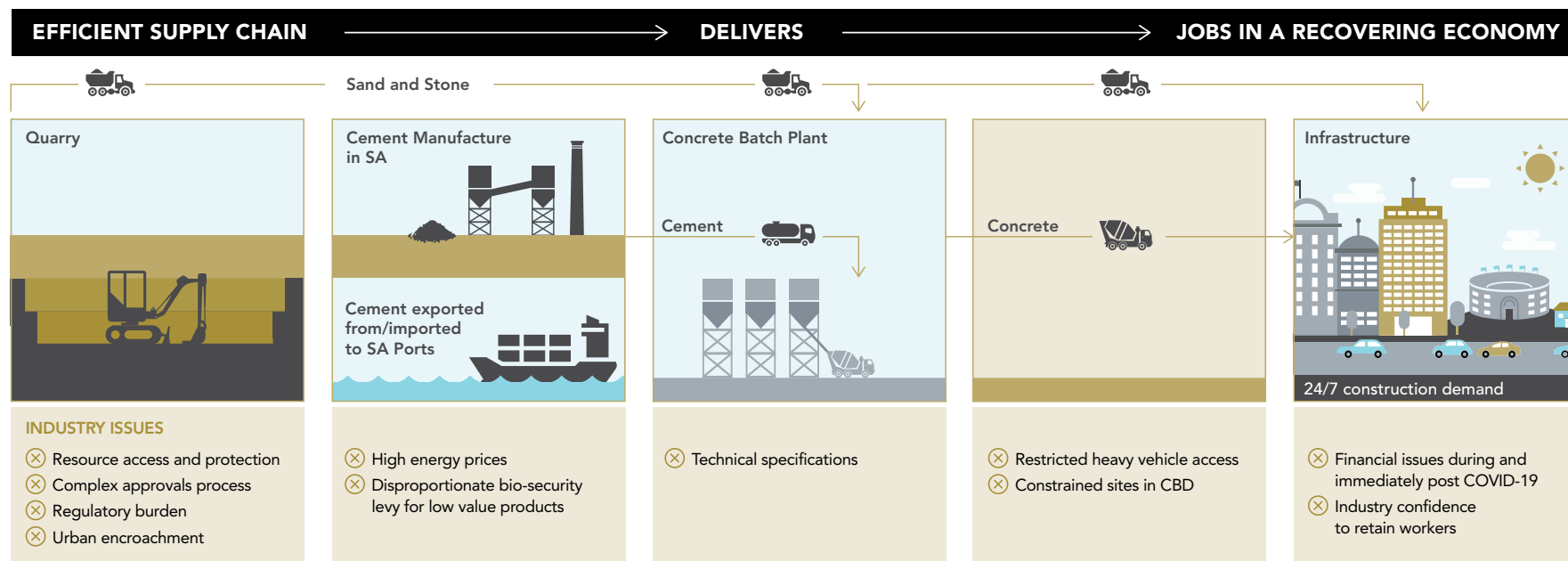
CEMENT, CONCRETE, STONE & SAND

Rebuilding South Australia;
Protecting Lives; Creating Jobs



HEAVY CONSTRUCTION MATERIALS SUPPLY CHAIN

The COVID-19 pandemic has significantly disrupted South Australia's economy. The construction sector, supported by an efficient heavy construction materials supply chain, provides the engine for South Australia's economic recovery. Cement, concrete, stone and sand are the critical materials that enable South Australia's construction industry, employing 70,000 workers and contributing 45% of South Australia's taxation revenue base.



IMPLEMENTING THESE CHANGES NOW WILL:



Keep people and communities safe and working



Allow South Australia to rebuild our economy fast



Attract essential investment



Fast-track critical infrastructure for the future

Facilitating economic recovery through stimulus, tax relief and regulatory improvement

WHAT NEEDS TO CHANGE

- ✓ Manage introduction of Respirable Crystalline Silica Workplace Exposure Standard
- ✓ Fast track approvals
- ✓ Act to further protect strategic resource areas for life of resource
- ✓ 24 hour product loading and sales
- ✓ Improved access to Extractive Areas Rehabilitation Fund

- ✓ 24 hr product loading and sales
- ✓ Globally competitive gas & electricity pricing
- ✓ Remove bio-security levy on cement and clinker, which inherently has low or no bio-security concern

- ✓ Shift to performance based specifications
- ✓ Alternative sources of aggregate substituted in concrete mixes if quarries closed due to COVID-19

- ✓ Require night time concrete pours in traffic congested and site constrained areas
- ✓ Streamline last kilometre access
- ✓ Provide greater access for higher mass limit vehicles

- ✓ Housing stimulus package
- ✓ Increase infrastructure spend
- ✓ Assist local government in infrastructure backlog
- ✓ Fast track development approvals
- ✓ Fast track road maintenance while roads remain uncongested
- ✓ Build roads in concrete (cheaper life cycle cost)
- ✓ Higher priority on local employment outcomes



BENEFITS OF ACTING NOW:

- ✓ Keeps South Australian workers employed
- ✓ Allows the construction sector to act as the engine room to rebuild South Australia's economy fast
- ✓ Enable heavy construction material supply to ramp up fast
- ✓ Retains industry skills and capability in South Australia
- ✓ Gives industry confidence to invest and raise capital
- ✓ Ensures South Australia's Government's record infrastructure investment remains on schedule
- ✓ Drives affordable and innovative infrastructure



ADELAIDE OFFICE

Level 30, 91 King William Street
Adelaide SA 5000

(+61) 448 848 848

www.ccaa.com.au
info@ccaa.com.au

